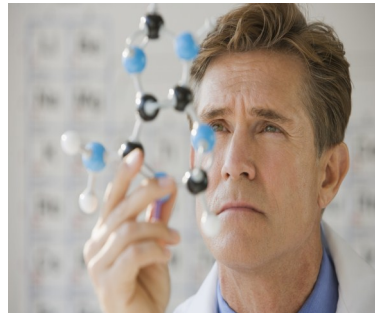
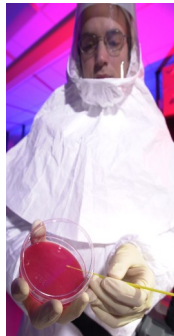


# THE GRADUATE SCHOOL TIMES

[www.grad.usf.edu](http://www.grad.usf.edu)  
Fall 2012  
Vol 39



## I N S I D E

THIS ISSUE

FROM THE DEAN

POSTDOCTORAL AFFAIRS BIOTECH EXPO

GRADUATE STUDENT AMBASSADORS

LEADERSHIP INSTITUTE

GRADUATE STUDENT SURVEY

NEW STUDENT ORIENTATION

CALENDAR OF EVENTS & MEETINGS

THE GRADUATE SCHOOL TIMES  
IS PUBLISHED BY THE  
GRADUATE SCHOOL

DESIGN EDITOR:  
GARY D. OLIVER

CONTACT THE GRADUATE  
SCHOOL TIMES

Graduate School  
4202 E. Fowler Ave, ALN 226  
Tampa, Florida 33620-5816  
(813) 974-8800  
[www.grad.usf.edu](http://www.grad.usf.edu)

## FROM THE DEAN

Dear University Community:

The Graduate School is proud to provide you with our latest edition of the "Graduate School Times." We have exciting news to share!

We are proud to introduce our new initiative - Graduate Student Ambassadors. Fourteen graduate student representatives from the colleges will serve as advisors to the Graduate Dean and will represent the student body at meetings, events, and Dialogue with the Dean.

Also, this past spring the Graduate School cosponsored the Graduate Student Survey and the results are now available on our website. Information from the survey has helped us implement new initiatives and services.

We also welcomed our second class of Doctoral Leadership Fellows who begin their two year leadership development program. Also there is information in the newsletter about our new Biotech Vendor Fair.

We hope your semester has gotten off to a good start! I wish to thank all of you for your continued support of the Graduate School and graduate education at the University of South Florida.

Best Wishes,  
Dean Karen Liller  
USF Graduate School

# GRADUATE SCHOOL NEWS



---

## POSTDOCTORAL AFFAIRS TO HOST BIOTECH EXPO

The USF Postdoctoral Scholars Association will be hosting its first annual Biotech Expo with vendors from many leading science companies such as Sigma-Aldrich, Fisher Scientific, BioRad, and Grainger. These vendors will have repre-

sentative on site to talk about new technologies and some will be available to answer questions about career in the industry.

The Biotech Expo will take place on **Thursday, October 11, 2012** from **11:30 am** until

**2:00 pm** in the Marshall Student Center Ballroom B/C.

For more information or to RSVP for the event, contact Dr. Eric Hoyer in the Office of Postdoctoral Affairs at [ehoyer@usf.edu](mailto:ehoyer@usf.edu).

---

## GRADUATE STUDENT AMBASSADORS PROGRAM

The Graduate School is starting a new initiative called the **Graduate Student Ambassadors**.

This select group of students will advise the Dean of the Graduate School on various issues and will be actively involved in strengthening the graduate community by creating a network for communication and assistance among prospective, current and former graduate students.

GS Ambassadors will participate in *Dialogue with the Dean (DWD)* meetings, advise other graduate school administrators on matters of interest to graduate students, serve on Graduate School and other University committees, represent their colleges and

programs on the Graduate and Professional Student Council (GPSC) and participate in other special Graduate School programs or projects (e.g. Open House, Week of Welcome, and Graduate Student Appreciation Week).

This is a unique opportunity for our graduate students to become actively involved in shaping decisions about their education and their graduate experience here at USF.

Therefore, the Graduate School is seeking 14 outstanding graduate students to represent



their colleges as ambassadors during the inaugural year. Each college will have at least one GS Ambassador, and larger colleges will have 2 or 3, depending on enrollment.

Interested students may download an application online from <http://www.grad.usf.edu/grad-ambassadors.php> or contact Mr. Gary Oliver at [oliverg@usf.edu](mailto:oliverg@usf.edu) or 813.974.7935 for additional information.

# GRADUATE SCHOOL NEWS

---



## LEADERSHIP INSTITUTE FELLOWS CLASS OF 2012

The University of South Florida Graduate School is pleased to welcome the Second Class of the Doctoral Student Leadership Institute.

This interdisciplinary institute is a two year commitment that provides opportunities for doctoral students to take a one-semester leadership course, shadow effective leaders for two semesters, develop a leadership plan that they will implement, and more!

Fellows will have the opportunity to participate in leadership conferences, retreats, and workshops and will also be mentored by the inaugural Institute fellows.

---

## GRADUATE STUDENT SURVEY

We are pleased to announce that the first Graduate Student Survey has been completed. Results from the survey are now available on the Graduate School website. The purpose of the survey was to determine the needs and concerns of graduate students across the USF Tampa campus. The findings identify student needs, opinions and current trends in various student sectors. Results have been shared throughout the university. Thanks to graduate student Laurie-Ann Spencer for her hard work on this survey!

The Graduate School will utilize the findings to implement new initiatives and improve current services to help enhance graduate student life at USF.

---

## NEW GRADUATE STUDENT ORIENTATION-FALL 2012



New Graduate Student Orientation was held on Tuesday, August 14, 2012 in the Marshall Student Center. Nearly 750 new graduate students were welcomed to USF and the Graduate School by administrators, faculty and staff.

This year, graduate students were given the opportunity to attend either an afternoon or evening plenary session, various breakout sessions, an information fair, and a mixer.

The breakout session topics ranged from library presentations on copyright, literature review and general library resources to panel discussions led by current domestic and international students. There were also general sessions on financial aid and resources, assistantship, and other important services for graduate students.

The day ended with a great opportunity for graduate students to interact in an informal social hour at Beef O'Bradys in the Marshall Student Center!

# GRADUATE SCHOOL CALENDAR OF EVENTS & MEETING SCHEDULE

---

## ACADEMIC AFFAIRS

Electronic Thesis & Dissertation Submission Deadline Fall 2012\*  
(<http://www.grad.usf.edu/ETD-FAQ.php#a>)

<b>ETD Thesis Deadline</b>	November 16th	5:00 pm
<b>ETD Dissertation Deadline</b>	November 30th	5:00 pm

<b>Commencement-USF Sun Dome</b>	December 15th	6:00 pm
----------------------------------	---------------	---------

*\* Note these are Graduate School Deadlines*

## POSTDOCTORAL AFFAIRS

**USF Biotech Expo \***

	October 11th	11:30 am-2:00 pm	MSC B/C
--	--------------	------------------	---------

**“Graduate School: Taking Care of Business” Lecture\***

	October 24th	2:00 pm-4:00 pm	MSC 2709
--	--------------	-----------------	----------

*\*Please RSVP to [ehoyer@usf.edu](mailto:ehoyer@usf.edu) for either event*

## PROFESSIONAL DEVELOPMENT WORKSHOPS

(<http://www.grad.usf.edu/workshops.php>)

**PREPARING FOR A FACULTY POSITION**

	October 18th	1:30 pm-3:00 pm	ALN 296
--	--------------	-----------------	---------

**WRITING FOR PUBLICATION**

	October 29th	4:00 pm-5:30 pm	ALN 296
--	--------------	-----------------	---------

---

## GRADUATE PROGRAM COORDINATOR BROWN BAG MEETINGS

(<http://www.grad.usf.edu/graduate-directors.php>)

**11:30 pm-1:30 pm, TECO Room, Anchin Center**

October 11th	11:30 am-1:00 pm*
December 6th	11:30 am-1:30pm

*\* Note early end time*

---

## GRADUATE SCHOOL TO-GO FALL 2012 (CAMPUS RECRUITMENT)

October 10th	10:00 am-2:00 pm	MSC Lobby
October 11th	3:00 pm-7:00 pm	Student Rec. Center
October 24th & 31st	10:00 am-2:00 pm	Bull Market
November 6th	10:30 am-2:30 pm	Tampa Library Lobby
November 14th	10:00 am-2:00 pm	MSC Lobby
December 3rd	4:00 pm-7:00 pm	Tampa Library Lobby

## GRADUATE AND PROFESSIONAL STUDENT COUNCIL (GPSC)

### GENERAL MEETINGS

(<http://www.gpsc.usf.edu/newsletter.asp>)

November 5th	4:00 pm-5:00 pm	MSC 3708
--------------	-----------------	----------

**BE PREPARED**

**BE SUCCESSFUL**

**BE A LEADER**

**FOR UP TO DATE NEWS PLEASE VISIT OUR WEBSITE AT:  
WWW.GRAD.USF.EDU**



Follow us on Facebook  
[www.facebook.com/USF Graduate School](http://www.facebook.com/USF Graduate School)



Follow us on Twitter  
[@USFGRADSCHOOL](https://twitter.com/USFGRADSCHOOL)

**GRADUATE SCHOOL**  
University of South Florida | 4202 E. Fowler Ave., STOP ALN 226  
Tampa, FL 33620-5816



T 813.974.8800 | F 813.974.7943 | [www.grad.usf.edu](http://www.grad.usf.edu)